

Kollaboratives Terminologiemangement

Von Terminologieinseln zu einer konsistenten
Corporate Language
Single Source Forum 2009
Vortrag von Oliver Collmann



- ▶ acrolinx Hintergrund
- ▶ Sprachinseln statt einer Corporate Language
- ▶ Praxisbeispiele
- ▶ Ökosystem der Produktinformation
- ▶ Autorenunterstützung als unternehmensweite Aufgabe
- ▶ Tools zur Prozessunterstützung

- ▶ Gründung 02.02.2002 aus dem DFKI Saarbrücken
- ▶ 35 Mitarbeiter
 - ▶ Entwicklung und Vertrieb in Berlin
 - ▶ Vertriebsbüros USA, Zürich, Frankfurt
- ▶ Software zur Unterstützung von Autoren bei
 - ▶ einheitlicher Terminologie
 - ▶ sprachlicher Konsistenz
 - ▶ übersetzungsgerechtem Schreiben
 - ▶ in den Sprachen DE, EN, FR, JP
 - ▶ Technisches Deutsch, Simplified English



Sprachinseln statt einer Corporate Language ◀

Sprache Produktmarketing

**Sprache
ERP System**

**Sprache
Produktinformation**

**Sprache
Training**

Beispiele Terminologie ◀

- ▶ Dazu den **4-Wegehahn** schließen, ...
- ▶ Dazu das **Vierwegeventil** schließen, ...
- ▶ Dazu den **4-Wege-Hahn** schließen, ...
- ▶ Dazu das **4-Wege-Ventil** schließen, ...
- ▶ Dazu das **4-Wegeventil** schließen, ...

- ▶ Das **Heizungselement** muss vor dem Einbau gereinigt werden.
- ▶ Das **Heizungelement** muss vor dem Einbau gereinigt werden.
- ▶ Das **Heizungs-Element** muss vor dem Einbau gereinigt werden.
- ▶ Das **Heizelement** muss vor dem Einbau gereinigt werden.
- ▶ Das **Heiz-Element** muss vor dem Einbau gereinigt werden.

- ▶ Der **Top-Hifi Verstärker** ist ein Verstärker mit Frequenzweichen.
- ▶ Der **Hifi-Verstärker** ist ein Verstärker mit Frequenzweichen.
- ▶ Der **Top-Hifi-Verstärker** ist ein Verstärker mit Frequenzweichen.
- ▶ Der **Hifi/Top-Hifi Verstärker** ist ein Verstärker mit Frequenzweichen.
- ▶ Der **Top-Hifiverstärker** ist ein Verstärker mit Frequenzweichen.

Beispiele Stil ◀

▶ Sicherheitsbestimmungen **beachten**.

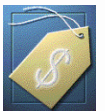


▶ **Beachten Sie** die Sicherheitsbestimmungen.

▶ Die Sicherheitsbestimmungen **müssen beachtet werden**.



▶ Die Sicherheitsbestimmungen **sind zu beachten**.



▶ **Es ist wichtig**, die Sicherheitsbestimmungen **zu beachten**.



Please enter start date before or equal to the end date.

Please enter a start date earlier than or the same as the end date.

Please enter an actual start date earlier than the actual end date.

The Start Date cannot exceed the End Date.

The End Date cannot precede the Start Date.

End Date must be later than Start Date.

End date must be equal to or later than the start date.

The end date must be later than or the same as the start date.

End Time must be later than the Start Time.

The valid grade's end date must be later than or equal to its start date.

Please enter an End Date that is later than or the same as the Start Date.

Competence end date has to be later than or equal to the start date.

The start date cannot be later than the end date.

The appraisal end date must be later than or equal to appraisal start date.

The Effective start date cannot be later than the Effective end date.

Date from cannot be later than date to.

The start date must be on or before the end date.

The Start Date cannot be after the End Date.

Your end date must be after your start date.

The end date cannot be before the start date.

Start date must be before end date

Beispiel Start Date ◀

Your start date must be before your end date.

Enter a Start Date that is on or later than &LL.

Please enter an end date that is later than the start date.

Date To must be later than or equal to Date From.

The Date To must be later than the Date Received.

The actual end date must be on or after the actual start date.

End date should be greater than start date.

End Date cannot be before the Start Date.

The start date must be prior to the end date.

You entered a start date later than the end date.

Ending range must be later or the same as starting range

Please enter a new start date later than the original end date.

The ending date must be later than or the same as the beginning date.

The date to has to be later than or equal to date from.

End Date must be greater than Start Date.

You cannot enter an "End Date" that is before your "Start Date."

End Date must be greater than or equal to Start Date.

Please enter a start date that is before the end date.

The end date you enter must be between the grade's start and end dates.

The start date you enter must be between the grade's start and end dates.

The projected end date must be on or after the projected start date.

The Period start date cannot be later than the Period end date.

Termkonfusion unternehmensweit ◀

SAP-System	Top-Hifi Verstärker
Dokumentation	Hifi-Verstärker
Training	Hifi/Top-Hifi Verstärker
Marketing	Top-Hifiverstärker

So sieht es für den Kunden aus ◀



WICHTIG:

Vor der ersten Inbetriebnahme den Akku für mindestens **16 Stunden** laden!

IMPORTANTE:

Avant la première mise en service il faut charger la batterie au moins **16 heures!**

IMPORTANTE:

Prima dell' messa in funzione caricare l'accumulatore per almeno **16 ore!**

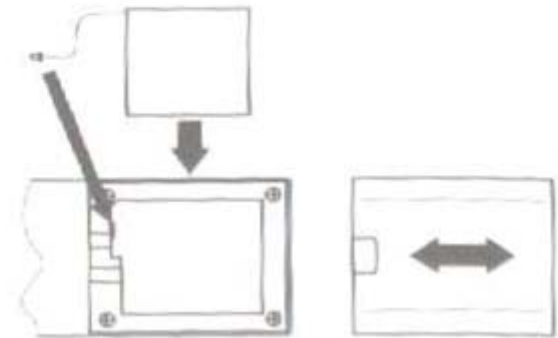
IMPORTANT:

Before the first use charge the battery for at least **16 hours!**


Preparing the Telephone

Inserting the battery pack

Open the battery compartment cover. Connect the plug leading from the battery pack to the corresponding socket in the battery compartment. Insert the battery pack in the battery compartment. Only use the battery pack supplied. Pay attention that the cable is not jammed. Close the battery compartment cover.



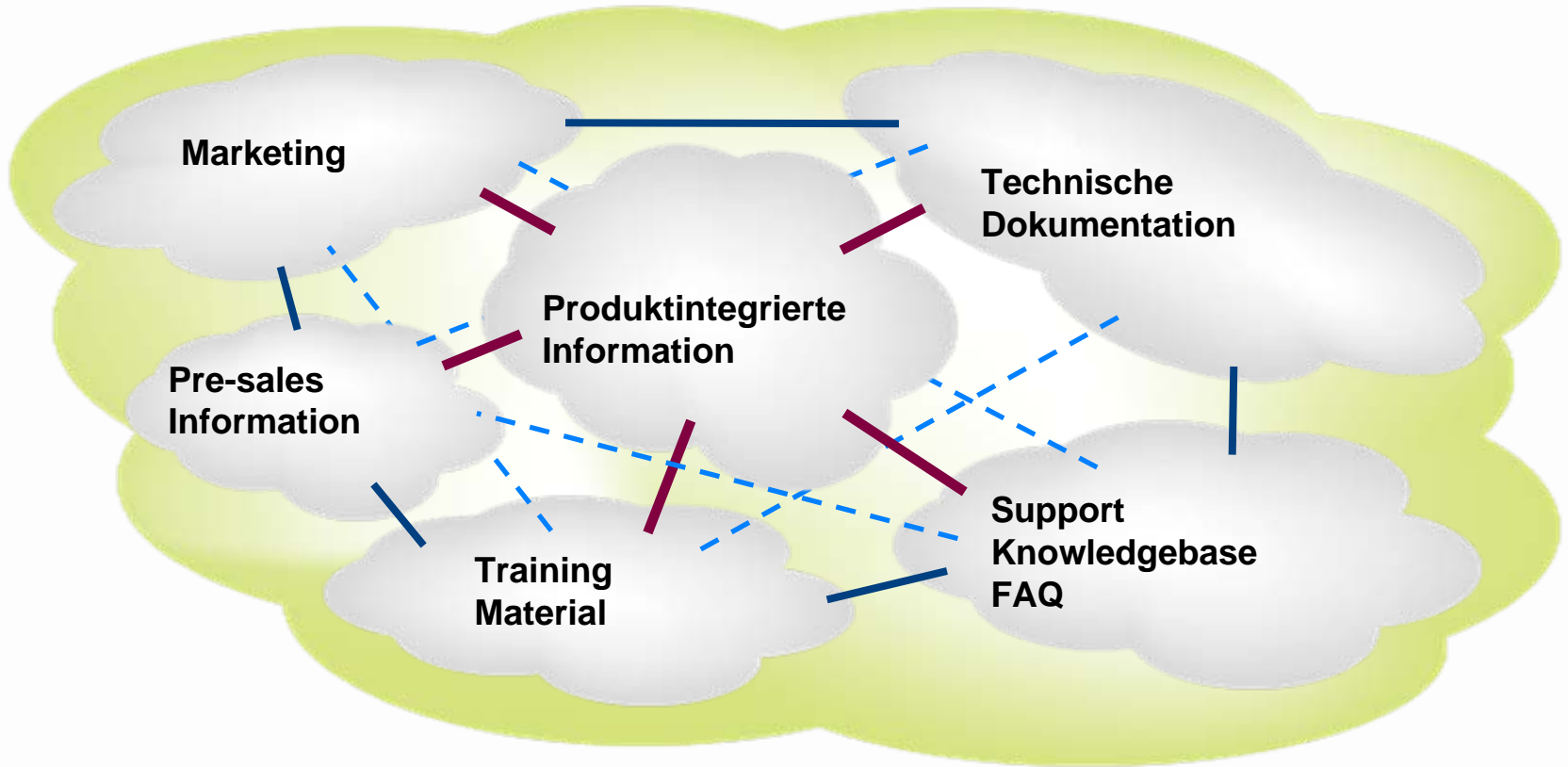
Charging the battery pack

 Before the handset is used for the first time, insert it in the base station / charging station for **at least 20 hours**.

The handset warms up during the charging process. This is normal and does not represent a risk. Do not charge the handset with charging units from other manufacturers. The current **battery charge status** is indicated in the display:

- ▶ Autorenunterstützung – eine unternehmensweite Aufgabe für die TD!

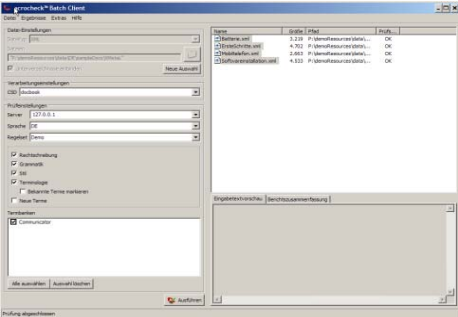
Ökosystem der Produktinformation ◀



Plug-in



Stapelverarbeitung



Berichtswesen

acrolinx™ aggregated Report

Document	Words	Abs.	%	Grammar	Terms	Spelling	Total
document1	121	5	4.1	0	0	0	4.1
document2	139	2	1.4	0	0	0	1.4
document3	182	0	0	0	0	0	0
document4	139	2	1.4	0	0	0	1.4
document5	359	4	1.1	0	0	0	1.1
document6	292	4	1.4	0	0	0	1.4
document7	154	3	1.9	0	0	0	1.9
document8	215	6	2.8	0	0	0	2.8
document9	326	6	1.8	0	0	0	1.8
document10	218	7	3.2	0	0	0	3.2
document11	136	0	0	0	0	0	0
document12	141	1	0.7	0	0	0	0.7
document13	90	1	1.1	0	0	0	1.1
document14	184	2	1.1	0	0	0	1.1
document15	111	1	0.9	0	0	0	0.9
document16	79	1	1.3	0	0	0	1.3
document17	38	0	0	0	0	0	0
document18	43	2	4.7	0	0	0	4.7
document19	76	1	1.3	0	0	0	1.3
document20	143	4	2.8	0	0	0	2.8
document21	80	0	0	0	0	0	0
document22	14	0	0	0	0	0	0
document23	51	0	0	0	0	0	0

IQ Server

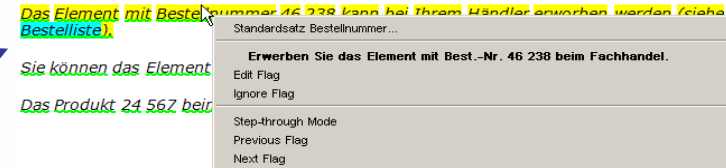


Terminologie-Management

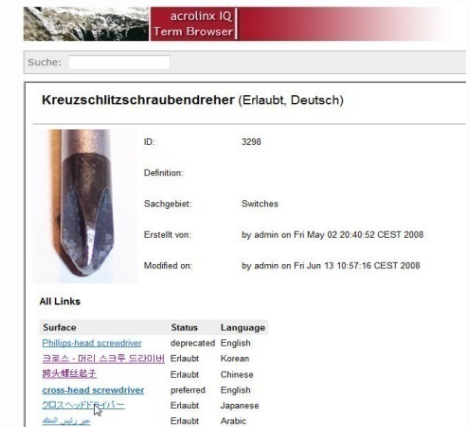


Überblick IQ

Intelligente Wiederverwendung



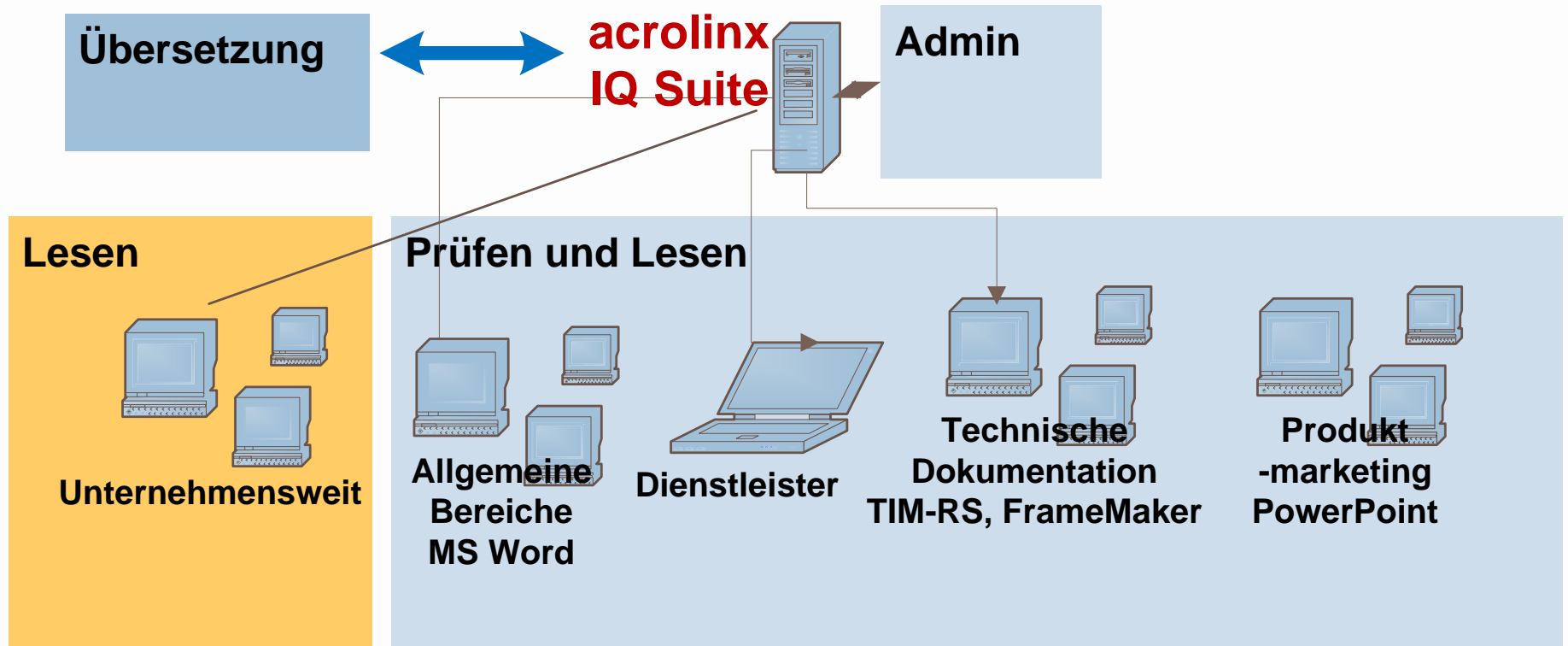
Termbrowser



Unterstützung der Autoren mit linguistischer Intelligenz bei

- ▶ Terminologie
- ▶ Sprachstil
- ▶ Wiederverwendung von Textelementen
- ▶ Grammatik und Rechtschreibung

Unternehmensweite Autorenunterstützung ◀



▶ Fragen?

▶ E-Mail:

oliver.collmann@acrolinx.com

▶ Web: www.acrolinx.com